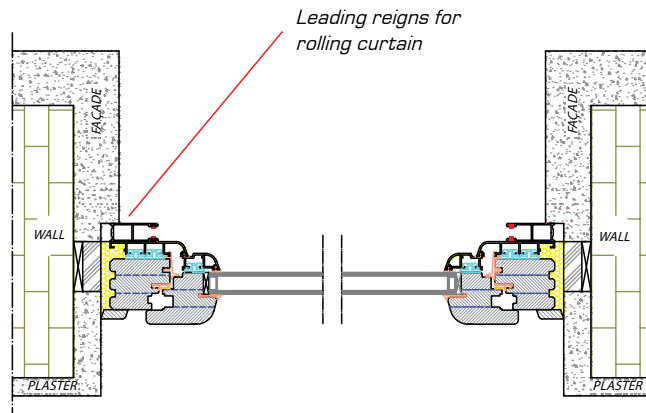
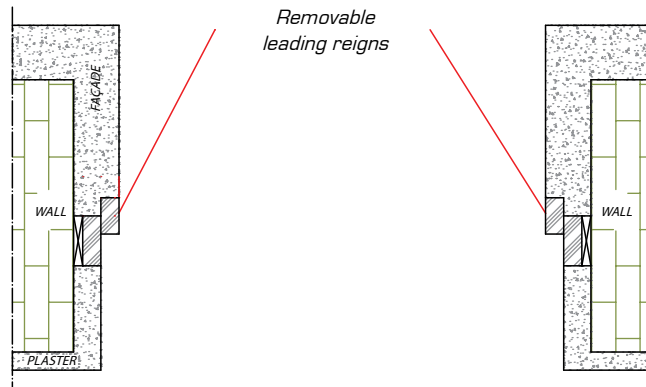


CHARACTERISTIC INSTALLATION DETAILS

DRY INSTALLATION PROCEDURE

A detail of substructure installation:
Façade treatment and internal plastering



REPLACEMENT OF EXISTING JOINERY

The existing window is cut out and the remainder serves as the substructure for the new window. Its outside is seamed with an aluminium lath. The inside-facing edge surfaces are covered with a wooden seaming.

